

Supported aluminium shafts



AWMU



Order key

Type	Size	Options
------	------	---------

A W M U - 12 - 2000

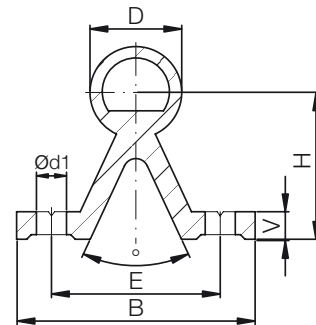
Aluminium shaft	Metric	Supported	Outer Ø	Shaft length [mm]
-----------------	--------	-----------	---------	-------------------

- Material: EN AW 6061/6060
- Straightness: DIN 12020
- Hardness: 75 HB
- Surface: hard anodised
- Hardness: up to 550 HV
- Hole pitches symmetrical C5 = C6

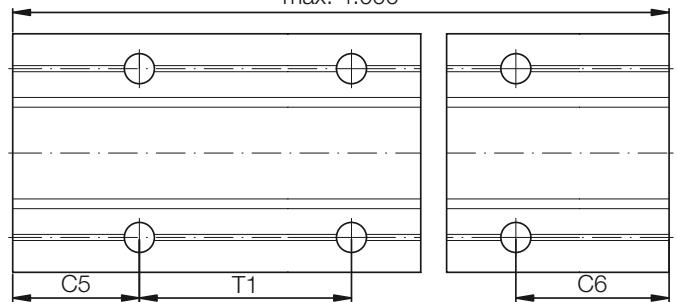


Hard anodised surfaces

► Page 840



max. 4.000



Dimensions [mm]

Part No.	D	B	H	V	d1	(°)	E	T1	C5/C6		Max. length	Weight [kg/m]
	-0.1		±0.25				±0.25		min.	max.		
AWMU-12	12	40	22	5	4.5	50	29	75	20	57	4,000	0.75
AWMU-16	16	45	26	5	5.5	50	33	100	20	69	4,000	1.00
AWMU-20	20	52	32	6	6.6	50	37	100	20	69	4,000	1.42
AWMU-25	25	57	36	6	6.6	50	42	120	20	79	4,000	1.81
AWMU-30	30	69	42	7	9.0	50	51	150	20	94	4,000	2.69
AWMU-40 ⁸⁶⁾	40	73	50	8	9.0	50	55	200	20	119	4,000	4.06

⁸⁶⁾ Tolerance for shaft diameter D is -0.15



Order example:

AWMU-16-500: supported aluminium shaft Ø 16 mm, 500 mm in length