

PUR Servo cable | CF27.D

- for maximum load requirements
- PUR outer jacket
- shielded
- oil-resistant and coolant-resistant
- notch-resistant
- flame-retardant
- hydrolysis-resistant and microbe-resistant
- PVC-free/halogen-free

	Conductor	Stranded conductor in especially bending-resistant version consisting of bare copper wires (following EN 60228).
	Core insulation	Mechanically high-quality, especially low-capacitance TPE mixture.
	Core identification	<b>Energy conductor:</b> Cores black with white numerals, one core green-yellow. 1. core: U / L1 / C / L+    2. core: V / L2 3. core: W / L3 / D / L- <b>1 signal pair:</b> Cores black with white numerals. 1. control core: 4            2. control core: 5 <b>2 signal pairs:</b> Cores black with white numerals. 1. control core: 5            2. control core: 6 3. control core: 7            4. control core: 8 <b>Star-quad:</b> yellow, black, red, white
	Core stranding	Energy conductor with signal pair elements stranded together with elements for high tensile stresses.
	Element shield	Extremely bending-resistant braiding made of tinned copper wires. Coverage approx. 70% linear, approx. 90% optical.
	Inner jacket	PUR mixture adapted to suit the requirements in energy chains®.
	Overall shield	Extremely bending-resistant braiding made of tinned copper wires. Coverage approx. 70% linear, approx. 90% optical.
	Outer jacket	Low-adhesion, highly abrasion-resistant mixture on the basis of PUR, adapted to suit the requirements in energy chains® (following DIN VDE 0282 Part 10). Colour: Pastel orange (similar to RAL 2003)
	Bending radius	<b>moved</b> minimum 7,5 x d <b>fixed</b> minimum 4 x d
	Temperature	<b>moved</b> -20 °C to +80 °C <b>fixed</b> -40 °C to +80 °C
	v max.	10 m/s, 5 m/s
	unsupported/gliding a max.	80 m/s²
	Travel distance	Freely suspended travel distances and up to 100 m for gliding applications, Class 4
	UV-resistant	Medium
	Nominal voltage	600/1000 V (following DIN VDE 0250).

eplan download, configurator ► [www.igus.eu/CF27D](http://www.igus.eu/CF27D)

1030 types from stock no cutting costs ...  
(for up to 10 cuts of the same type)

Class 6.4.3 (6 maximum load requirements 4 travel distance up to 100 m 3 oil-resistant)

	Testing voltage	4000 V (following DIN VDE 0281-2).
	Oil	Oil-resistant (following DIN EN 50363-10-2), Class 3.
	Offshore	MUD-resistant following NEK 606 – status 2009.
	Flame-retardant	According to IEC 60332-1-2, CEI 20-35, FT1, VW-1
	Silicon-free	Free from silicon which can affect paint adhesion (following PV 3.10.7 – status 1992).
	Halogen-free	Following EN 50267-2-1.
	UL/CSA	Style 10492 and 20234, 1000 V, 80 °C
	NFPA	Following NFPA 79-2012 chapter 12.9
	CEI	Following CEI 20-35
	CE	Following 2006/95/EG
	DESINA	According to VDW, DESINA standardisation
	Lead free	Following 2011/65/EC (RoHS-II)
	Clean room	According to ISO Class 1. Outer jacket material complies with CF27.07.05.02.01.D, tested by IPA according to standard 14644-1
	CTP	Certified according to N° C-DE.PB49.V.00397
	EAC	Certified according to N° TC RU C-DE.ME77.B.00964

New! Guaranteed lifetime for this series according to the "chainflex® guarantee club" conditions ► Page 22-25						
Double strokes*	5 million		7,5 million		10 million	
Temperature, from/to [°C]	v max. [m/s]	a max. [m/s²]	Travel distance [m]	R min. [factor x d]	R min. [factor x d]	R min. [factor x d]
-20 / -10				10	11	12
-10 / +70	10	5	80	7,5	8,5	9,5
+70 / +80				10	11	12

\* higher number of double strokes possible

Typical application area

- for maximum load requirements
- almost unlimited resistance to oil
- Indoor and outdoor applications, UV-resistant
- freely suspended travel distances and up to 100 m for gliding applications
- Storage and retrieval units for high-bay warehouses, machining units/machine tools, quick handling, clean room, semiconductor insertion, outdoor cranes, low-temperature applications

Test data ► Page 56 or [www.igus.eu/test12](http://www.igus.eu/test12)

... no minimum order quantity ...  
igus® GmbH Cologne | Tel. +49(0)2203/9649-800 Fax -222 | [info@igus.de](mailto:info@igus.de) | [www.chainflex.eu](http://www.chainflex.eu)



Image exemplary.

Delivery program Part No.	Number of cores and conductor nominal cross section [mm²]	External diameter max. [mm]	Copper index [kg/km]	Weight [kg/km]
1 signal pair shielded				
CF27.07.05.02.01.D	(4 G 0,75+(2x0,5)C)C	11,5	95	175
CF27.15.10.02.01.D <sup>(1)</sup>	(4 G 1,5+(2x1,0)C)C	12,5	130	226
CF27.15.15.02.01.D	(4 G 1,5+(2x1,5)C)C	13,0	144	260
CF27.25.10.02.01.D <sup>(1)</sup>	(4 G 2,5+(2x1,0)C)C	14,0	184	297
CF27.25.15.02.01.D	(4 G 2,5+(2x1,5)C)C	14,5	199	325
CF27.40.15.02.01.D	(4 G 4,0+(2x1,5)C)C	16,0	257	402
CF27.60.15.02.01.D	(4 G 6,0+(2x1,5)C)C	17,5	357	580
CF27.100.15.02.01.D	(4 G 10,0+(2x1,5)C)C	21,5	540	900
CF27.160.15.02.01.D	(4 G 16,0+(2x1,5)C)C	24,5	716	1150
CF27.250.15.02.01.D	(4 G 25,0+(2x1,5)C)C	28,5	1140	1523
CF27.350.15.02.01.D	(4 G 35,0+(2x1,5)C)C	32,5	1560	2079
2 signal pairs shielded				
CF27.07.03.02.02.D	(4 G 0,75+2x(2x0,34)C)C	12,5	105	206
CF27.10.07.02.02.D	(4 G 1,0+2x(2x0,75)C)C	13,5	152	265
CF27.15.07.02.02.D	(4 G 1,5+2x(2x0,75)C)C	14,0	175	300
CF27.25.15.02.02.D	(4 G 2,5+2x(2x1,5)C)C	16,5	265	412
CF27.40.15.02.02.D	(4 G 4,0+2x(2x1,5)C)C	18,0	314	485
CF27.60.15.02.02.D	(4 G 6,0+2x(2x1,5)C)C	20,0	410	643
CF27.100.15.02.02.D	(4 G 10,0+2x(2x1,5)C)C	23,5	594	1000
CF27.160.15.02.02.D	(4 G 16,0+2x(2x1,5)C)C	26,0	790	1250
CF27.250.15.02.02.D	(4 G 25,0+2x(2x1,5)C)C	31,0	1200	1890
CF27.350.15.02.02.D <sup>(1)</sup>	(4 G 35,0+2x(2x1,5)C)C	33,5	1597	2150
1 Star-quad shielded				
CF27.15.05.04.D	(4 G 1,5+(4x0,5)C)C	13,0	142	310
CF27.25.05.04.D	(4 G 2,5+(4x0,5)C)C	14,5	199	348
CF27.40.05.04.D	(4 G 4,0+(4x0,5)C)C	16,0	256	480
CF27.60.05.04.D	(4 G 6,0+(4x0,5)C)C	17,5	371	550


(1) Delivery time upon inquiry.  
(11) Phase-out model  
**Note:** The mentioned external diameters are maximum values and may tend toward lower tolerance limits.  
G = with green-yellow earth core    x = without earth core

 eplan download, configurator ► [www.igus.eu/CF27D](http://www.igus.eu/CF27D)

1030 types from stock no cutting costs ...  
(for up to 10 cuts of the same type)

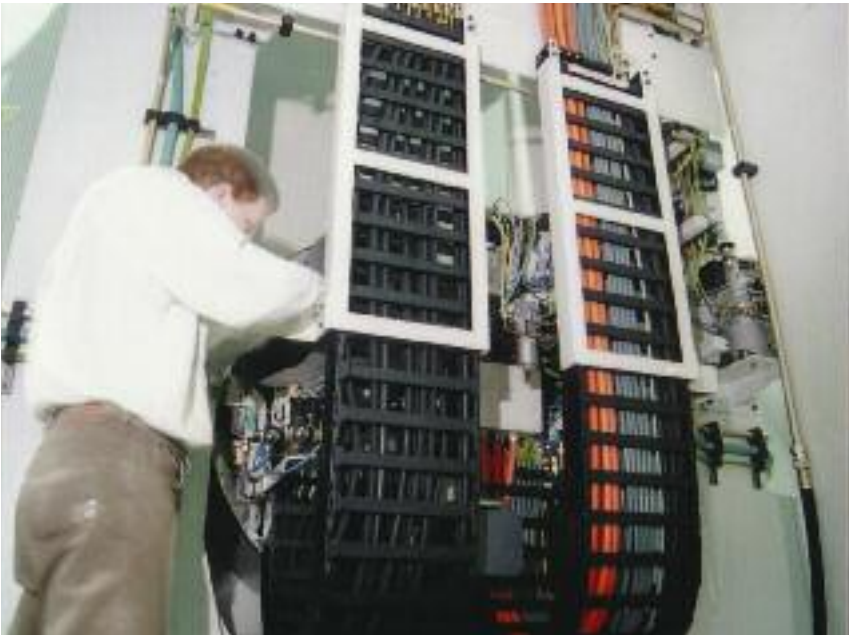
Delivery program Part No.	Number of cores and conductor nominal cross section [mm²]	External diameter max. [mm]	Copper index [kg/km]	Weight [kg/km]
Without signal pair				
CF27.07.04.D <sup>(1)</sup>	(4 G 0,75)C	9,5	52	113
CF27.10.04.D <sup>(1)</sup>	(4 G 1,0)C	10,0	62	126
CF27.15.04.D	(4 G 1,5)C	10,5	86	163
CF27.25.04.D	(4 G 2,5)C	12,5	140	260
CF27.500.04.D	(4 G 50,0)C	37,0	2230	3200

(1) Delivery time upon inquiry.  
**Note:** The mentioned external diameters are maximum values and may tend toward lower tolerance limits.  
G = with green-yellow earth core    x = without earth core

 Order example: CF27.15.10.02.01.D – in your desired length (0,5 m steps)  
CF27 chainflex® series .15 Code nominal cross section .10 Code nominal cross section signalpairs  
.02 Identification pairs .01 Number of pairs

 prices price list online  
[www.chainflex.eu/CF27D](http://www.chainflex.eu/CF27D)

 delivery time despatched in  
24 hours or today



Modular design, easy to retrofit: igus® E4 energy supply system and chainflex® cables.

... no minimum order quantity ...  
igus® GmbH Cologne | Tel. +49(0)2203/9649-800 Fax -222 | [info@igus.de](mailto:info@igus.de) | [www.chainflex.eu](http://www.chainflex.eu)