

■ UMETA BUTTON-HEAD GREASE NIPPLES ACCORDING TO DIN 3404

APPLICATION AREA

UMETA button-head grease nipples are particularly suitable for lubricating points with a big grease volume because of their specific high flow-rate of grease. As another result of the robust construction, these grease nipples are preferably used in the construction machinery.

VERSIONS

The UMETA button-head grease nipples are available in four different sizes:

- head Ø 10 mm = M4
- head Ø 16 mm = M1
- head Ø 22 mm = M22
- head hexagon-type, Hex size 15 mm = T1

In general, our button-head grease nipples according to DIN are made of steel, zinc-plated and passivated, and they are featured with a cylindrical thread. We offer various standard types also in brass or stainless steel 1.4305 ~ ASTM 303 and 1.4404 ~ ASTM 316L (V2A/V4A).

Upon request, UMETA manufactures button-head grease nipples in other versions, with respect to the following:

- dimension
- material
- thread size
- thread form (e. g. with tapered thread)
- opening pressure
- surface colour (e. g. yellow passivated)
- further surface treatment
- etc.

MOUNTING INSTRUCTIONS

In order to allow for a proper lubrication with all common grease guns, the head space, which is necessary for installation, should be considered (please see table with dimensions).

OPERATING INSTRUCTIONS

As suitable lubricating nozzle, we recommend our button-head coupler.

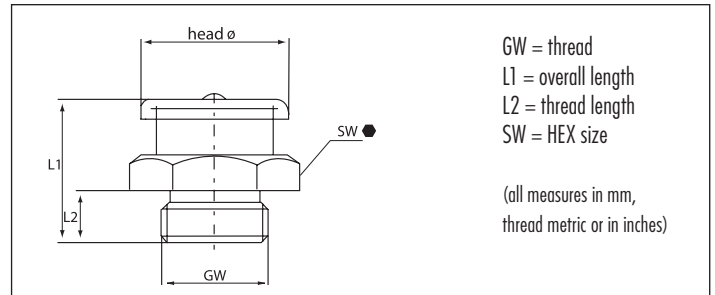


Type M4



Button-Head Grease Nipples

- head Ø 10 mm
- according to DIN 3404
- straight version A/180°
- standard versions according to DIN are made of steel, zinc-plated and passivated, with cylindrical thread
- for other types and materials, please see table, or upon request

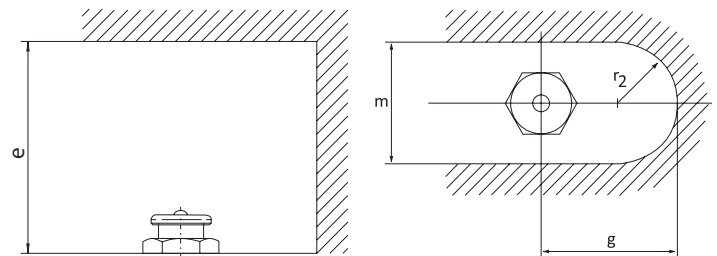


GW	M 6 x 1.0	Ref.- No.:	Steel	Brass	SST303	SST316L
L1	L2	SW				
13.5	6	11mm HEX	4201104			

GW	M 8 x 1.0	Ref.- No.:	Steel	Brass	SST303	SST316L
L1	L2	SW				
13.5	6	11mm HEX	4201107			

GW	M 10 x 1.0	Ref.- No.:	Steel	Brass	SST303	SST316L
L1	L2	SW				
13.5	6	11mm HEX	4201109			

GW	G 1/8, 1/8 - 28 BSPP	Ref.- No.:	Steel	Brass	SST303	SST316L
L1	L2	SW				
13.5	6	11mm HEX	4201161	4221161		



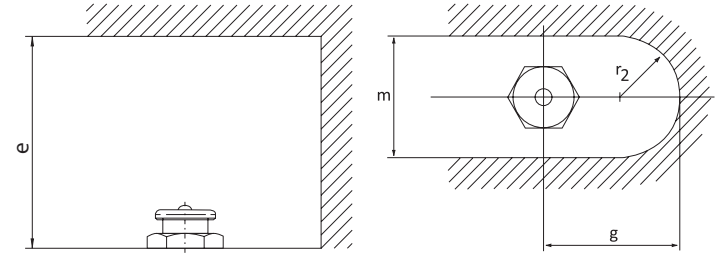
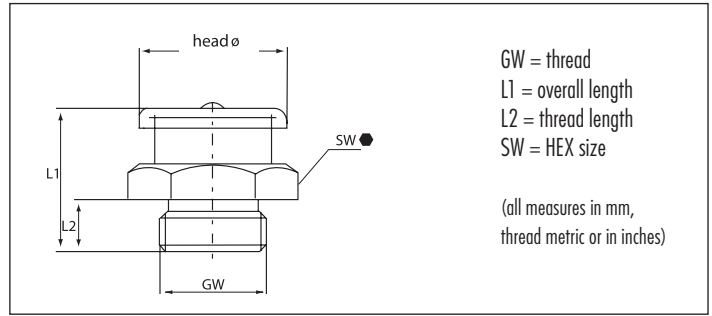
Instructions for installation: necessary space			
e =	50 mm/2-11/64"	r =	14 mm/41/64"
m =	26 mm/1-17/64"	g =	30 mm/1-25/64"

Type M1



Button-Head Grease Nipples

- head Ø 16 mm
- according to DIN 3404
- straight version A/180°
- standard versions according to DIN are made of steel, zinc-plated and passivated, with cylindrical thread
- for other types and materials, please see table, or upon request



Instructions for installation: necessary space			
e =	55 mm/2-11/64"	r =	16 mm/41/64"
m =	32 mm/1-17/64"	g =	35 mm/1-25/64"

GW	M 6 x 1.0		Ref.- No.:			
L1	L2	SW	Steel	Brass	SST303	SST316L
17	6	17mm HEX ●	4101704	4111704	4121704	4141704

GW	M 8 x 1.0		Ref.- No.:			
L1	L2	SW	Steel	Brass	SST303	SST316L
17	6	17mm HEX ●	4101707	4111707	4121707	4141707

GW	M 8 x 1.25		Ref.- No.:			
L1	L2	SW	Steel	Brass	SST303	SST316L
17	6	17mm HEX ●	4101708	4111708	4121708	

GW	M 10 x 1.0		Ref.- No.:			
L1	L2	SW	Steel	Brass	SST303	SST316L
17	6	17mm HEX ●	4101709	4111709	4121709	4141709
20	9	17mm HEX ●	4101713			

GW	M 10 x 1.5		Ref.- No.:			
L1	L2	SW	Steel	Brass	SST303	SST316L
17	6	17mm HEX ●	4101711	4111711	4121711	

GW	M 12 x 1.0		Ref.- No.:			
L1	L2	SW	Steel	Brass	SST303	SST316L
17	6	17mm HEX ●	4101732			

GW	M 12 x 1.5		Ref.- No.:			
L1	L2	SW	Steel	Brass	SST303	SST316L
17	6	17mm HEX ●	4101714	4111714	4121714	

GW	M 12 x 1.75		Ref.- No.:			
L1	L2	SW	Steel	Brass	SST303	SST316L
17	6	17mm HEX ●	4101715		4121715	

GW	M 14 x 1.5		Ref.- No.:			
L1	L2	SW	Steel	Brass	SST303	SST316L
17	6	17mm HEX ●	4101717		4121716	

GW	M 16 x 1.5		Ref.- No.:			
L1	L2	SW	Steel	Brass	SST303	SST316L
18	7	17mm HEX ●	4101719	4111715		

GW	G 1/8, 1/8 - 28 BSPP		Ref.- No.:			
L1	L2	SW	Steel	Brass	SST303	SST316L
17	6	17mm HEX ●	4101761	4111761	4121761	4141761

GW	G 1/4, 1/4 - 19 BSPP		Ref.- No.:			
L1	L2	SW	Steel	Brass	SST303	SST316L
17	6	17mm HEX ●	4101762	4111762	4121762	4141762

GW	G 3/8, 3/8 - 19 BSPP		Ref.- No.:			
L1	L2	SW	Steel	Brass	SST303	SST316L
18	7	17mm HEX ●	4101763	4111763	4121763	4141763

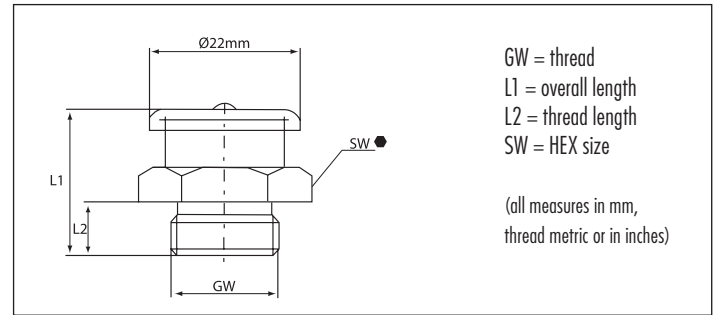
GW	1/4" - 18 NPT/PTF		Ref.- No.:			
L1	L2	SW	Steel	Brass	SST303	SST316L
21	10	17mm HEX ●	4101768			
21.5	11	17mm HEX ●				4141768

Type M22

Button-Head Grease Nipples



- head Ø 22 mm
- according to DIN 3404
- straight version A/180°
- standard versions according to DIN are made of steel, zinc-plated and passivated, with cylindrical thread
- for other types and materials, please see table, or upon request



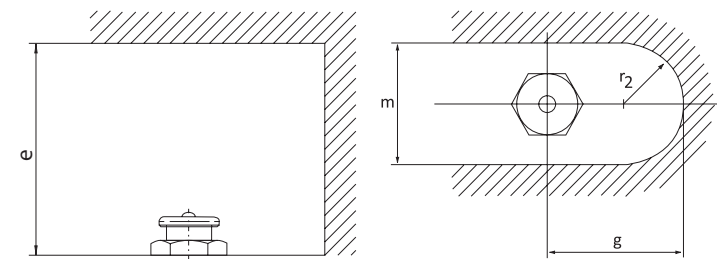
GW	M 10 x 1.0	Ref.- No.:				
L1	L2	SW	Steel	Brass	SST303	SST316L
23.5	9.5	22mm HEX	4302210			

GW	M 16 x 1.5	Ref.- No.:				
L1	L2	SW	Steel	Brass	SST303	SST316L
21.5	8	22mm HEX	4302219	4312219	4322219	

GW	G 1/4, 1/4 - 19 BSPP	Ref.- No.:				
L1	L2	SW	Steel	Brass	SST303	SST316L
21.5	8	22mm HEX	4302262	4312262	4322262	

GW	G 3/8, 3/8 - 19 BSPP	Ref.- No.:				
L1	L2	SW	Steel	Brass	SST303	SST316L
21.5	8	22mm HEX	4302263	4312263	4322263	

GW	G 1/2, 1/2 - 14 BSPP	Ref.- No.:				
L1	L2	SW	Steel	Brass	SST303	SST316L
21.5	8	22mm HEX	4302264			



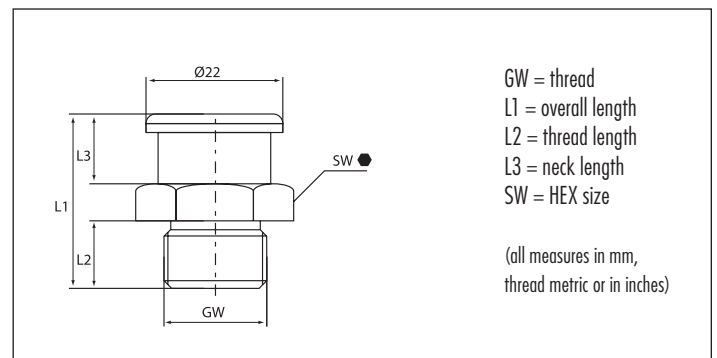
Instructions for installation: necessary space			
e =	60 mm/2-3/8"	r =	18 mm/23/32"
m =	36 mm/1-27/64"	g =	45 mm/1-25/32"

Type M22/L

Button-Head Grease Nipples



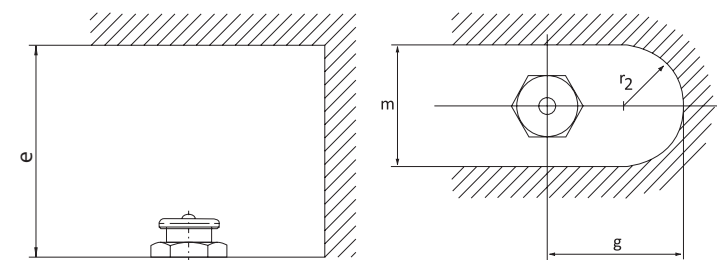
- head Ø 22 mm
- with extended neck
- according to DIN 3404
- straight version A/180°
- standard versions according to DIN are made of steel, zinc-plated and passivated, with cylindrical thread
- for other types and materials, please see table, or upon request



GW	G 1/4, 1/4 - 19 BSPP	Ref.- No.:					
L1	L2	L3	SW	Steel	Brass	SST303	SST316L
28	11.5	11	22mm HEX	4402262			

GW	G 3/8, 3/8 - 19 BSPP	Ref.- No.:					
L1	L2	L3	SW	Steel	Brass	SST303	SST316L
28	11.5	11	22mm HEX	4402263			

GW	G 1/2, 1/2 - 14 BSPP	Ref.- No.:					
L1	L2	L3	SW	Steel	Brass	SST303	SST316L
28	11.5	11	22mm HEX	4402264			



Instructions for installation: necessary space			
e =	66 mm/2-39/64"	r =	18 mm/23/32"
m =	36 mm/1-27/64"	g =	45 mm/1-25/32"