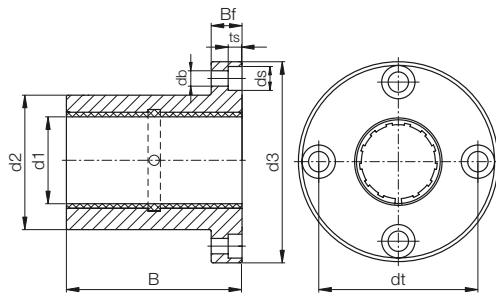


drylin® R flange bearings | Product range

Closed, anodised aluminium adapter, round flange



Order key

Type

Size

F J U M - 0 1 - 1 0

With flange

iglidur® J

Liner

Metric

Round design

d1



⁷⁸⁾ According to igus® testing method ► Page 1000

⁸²⁾ Design standards ► Page 944

Please note: installation instructions ► Page 945

Technical data

Part No.	d1-Tolerance ⁷⁸⁾ [mm]	Fmax. dynamic ⁸²⁾ P = 5 MPa [N]		Fmax. static ⁸²⁾ P = 35 MPa [N]		Weight [g]
FJZM-01-08	+0.032 +0.070	960	6,720	20		
FJUM-01-10	+0.030 +0.088	725	5,075	32		
FJUM-01-12	+0.030 +0.088	960	6,720	42		
FJUM-01-16	+0.030 +0.088	1,440	10,080	51		
FJUM-01-20	+0.030 +0.091	2,250	15,750	88		
FJUM-01-25	+0.030 +0.091	3,625	25,375	152		
FJUM-01-30	+0.040 +0.110	5,100	35,700	266		
FJUM-01-40	+0.040 +0.115	8,000	56,000	552		
FJUM-01-50	+0.050 +0.150	12,500	87,500	853		

Dimensions [mm]

d1	d2 h7	d3	dt	B	Bf	ts	db	ds	Part No.
8	16	32	24	25	8	3.1	3.5	6.0	FJZM-01-08
10	19	39	29	29	9	4.1	4.5	7.5	FJUM-01-10
12	22	42	32	32	9	4.1	4.5	7.5	FJUM-01-12
16	26	46	36	36	9	4.1	4.5	7.5	FJUM-01-16
20	32	54	43	45	11	5.1	5.5	9.0	FJUM-01-20
25	40	62	51	58	11	5.1	5.5	9.0	FJUM-01-25
30	47	76	62	68	14	6.1	6.6	11.0	FJUM-01-30
40	62	98	80	80	18	8.1	9.0	14.0	FJUM-01-40
50	75	112	94	100	18	8.1	9.0	14.0	FJUM-01-50

Available with drylin® liners (optional: J200/A180):



J



E7



X