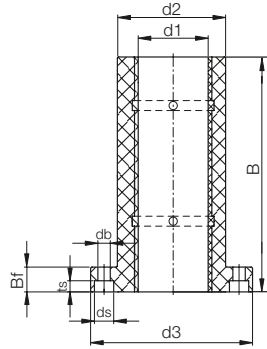
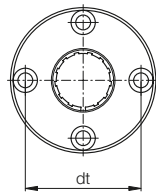


drylin® R flange bearings | Product range

Closed, anodised aluminium adapter,
round flange, tandem design



Order key

Type

Size

F J U M T-01-10

With flange	iglidur® J	Liner	Metric	Tandem	Round design	d1
-------------	------------	-------	--------	--------	--------------	----

- Equipped with 2 liners to increase the guide length



⁷⁸⁾ According to igus® testing method ► Page 1000

⁸⁵⁾ Fitted with 2 pieces of JSM-0810-16

Please note: installation instructions ► Page 945

Technical data

Part No.	Dimension nominal diameter [mm]	d1-Tolerance ⁷⁸⁾ [mm]	Guide length [N]	Projected bearing surface [N]	Weight [g]
FJZMT-01-08 ⁸⁵⁾	8	+0.032 +0.070	45	256	27.13
FJUMT-01-10	10	+0.030 +0.088	52	250	43.75
FJUMT-01-12	12	+0.030 +0.088	57	324	57.00
FJUMT-01-16	16	+0.030 +0.088	70	464	78.28
FJUMT-01-20	20	+0.030 +0.091	80	580	126.42
FJUMT-01-25	25	+0.030 +0.091	112	975	248.85
FJUMT-01-30	30	+0.040 +0.110	123	1,470	388.37
FJUMT-01-40	40	+0.040 +0.115	151	2,360	835.00
FJUMT-01-50	50	+0.050 +0.150	192	3,450	1,352.30

Dimensions [mm]

d1	d2 h7	d3	dt	B	Bf	ts	db	ds	Part No.
8	16	32	24	25	45	3.1	3.5	6.0	FJZMT-01-08 ⁸⁵⁾
10	19	39	29	29	52	4.1	4.5	7.5	FJUMT-01-10
12	22	42	32	32	57	4.1	4.5	7.5	FJUMT-01-12
16	26	46	36	36	70	4.1	4.5	7.5	FJUMT-01-16
20	32	54	43	45	80	5.1	5.5	9.0	FJUMT-01-20
25	40	62	51	58	112	5.1	5.5	9.0	FJUMT-01-25
30	47	76	62	68	123	6.1	6.6	11.0	FJUMT-01-30
40	62	98	80	80	151	8.1	9.0	14.0	FJUMT-01-40
50	75	112	94	100	192	8.1	9.0	14.0	FJUMT-01-50

Available with drylin® liners (optional: J200/A180):



J



E7



X