

drylin® R linear bearings | Product range

Open, anodised aluminium adapter - for supported shafts

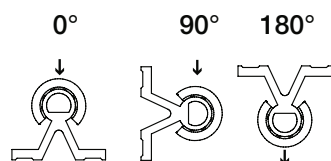
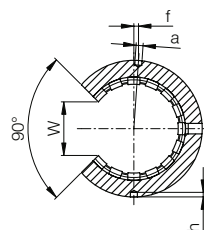
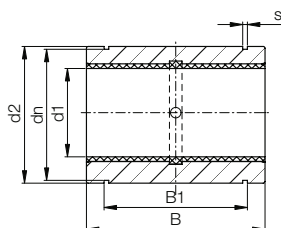


Order key

Type	Size
------	------

O J U M-01-10

Split	igidur® J	Liner	Metric	Standard	d1
-------	-----------	-------	--------	----------	----



⁷⁸⁾ According to igus® testing method ► Page 1000

⁸²⁾ Design standards ► Page 944

Please note: installation instructions ► Page 945



Imperial dimensions

► Page 1402

Technical data

Part No.	d1-Tolerance ⁷⁸⁾	F max. dynamic ⁸²⁾			F max. static ⁸²⁾			Weight [g]
		P = 5 MPa			P = 35 MPa			
		0°	90°	180°	0°	90°	180°	
OJUM-01-10	+0.030 +0.088	725	500	196	5,075	3,500	1,370	11
OJUM-01-12	+0.030 +0.088	960	635	240	6,720	4,445	1,680	15
OJUM-01-16	+0.030 +0.088	1,440	990	396	10,080	6,943	2,772	21
OJUM-01-20	+0.030 +0.091	2,250	1,800	900	15,750	12,600	6,300	42
OJUM-01-25	+0.030 +0.091	3,625	2,953	1,523	25,375	20,670	10,658	70
OJUM-01-30	+0.040 +0.110	5,100	4,250	2,278	35,700	29,735	15,946	132
OJUM-01-40	+0.040 +0.115	8,000	6,810	3,800	56,000	47,660	26,660	278
OJUM-01-50	+0.050 +0.150	12,500	10,750	6,125	87,500	75,265	42,875	479

Dimensions [mm]

d1	d2	B	W	a	dn	B1	s	f	h	Part No.
	h7	h10	-1	+0.1	h10	H10	H10	±0.2	-0.5	
10	19	29	7.3	0.0	17.5	21.6	1.30	0	1.2	OJUM-01-10
12	22	32	9.0	3.0	20.5	22.6	1.30	1.33 (7°)	1.2	OJUM-01-12
16	26	36	11.6	2.2	24.2	24.6	1.30	0	1.2	OJUM-01-16
20	32	45	12.0	2.2	29.6	31.2	1.60	0	1.2	OJUM-01-20
25	40	58	14.5	3.0	36.5	43.7	1.85	-1.5 (-4.3°)	1.5	OJUM-01-25
30	47	68	16.6	3.0	43.5	51.7	1.85	2 (4.9°)	2.0	OJUM-01-30
40	62	80	21.0	3.0	57.8	60.3	2.15	1.5 (2.8°)	2.0	OJUM-01-40
50	75	100	25.5	5.0	70.5	77.3	2.65	2.5 (3.8°)	2.0	OJUM-01-50

Can be combined with:



RQA-01



RTA-01



RGA-01



RGAS-01



J



E7



X

Available with drylin® liners (optional: J200/A180):