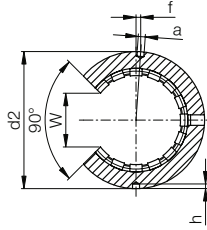
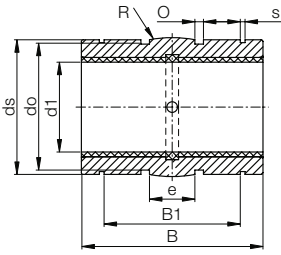


# drylin® R linear bearings | Product range

Open, anodised aluminium adapter, floating bearing



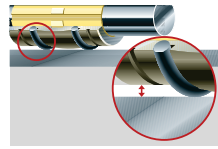
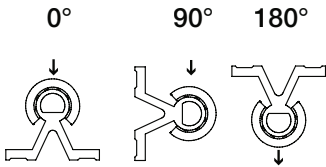
Order key

Type

Size

O J U M-03-10

Open	igidur® J	Liner	Metric	Self-aligning	d1
------	-----------	-------	--------	---------------	----



- With reduced outer diameter, spherical area on the outer diameter, O-rings for elastic seating and hard anodised surface



<sup>78)</sup> According to igus® testing method ▶ Page 1000

<sup>82)</sup> Design standards ▶ Page 944

Please note: installation instructions ▶ Page 945



Imperial dimensions

▶ Page 1402

## Technical data

Part No.	Housing bore Ø H7 [mm]	d1-Tolerance <sup>78)</sup> +0.030 +0.088	F max. dynamic <sup>82)</sup> P = 5 MPa			F max. static <sup>82)</sup> P = 35 MPa			Weight [g]
			0°	90°	180°	0°	90°	180°	
			<b>OJUM-03-10</b>	19	+0.030 +0.088	725	500	196	
<b>OJUM-03-12</b>	22	+0.030 +0.088	960	635	240	6,720	4,445	1,680	13
<b>OJUM-03-16</b>	26	+0.030 +0.088	1,440	990	396	10,080	6,943	2,772	19
<b>OJUM-03-20</b>	32	+0.030 +0.091	2,250	1,800	900	15,750	12,600	6,300	38
<b>OJUM-03-25</b>	40	+0.030 +0.091	3,625	2,953	1,523	25,375	20,670	10,658	63
<b>OJUM-03-30</b>	47	+0.040 +0.110	5,100	4,250	2,278	35,700	29,735	15,946	119
<b>OJUM-03-40</b>	62	+0.040 +0.115	8,000	6,810	3,800	56,000	47,660	26,600	250
<b>OJUM-03-50</b>	75	+0.050 +0.150	12,500	10,750	6,125	87,500	75,265	42,875	431

## Dimensions [mm]

d1	d2	ds	e	o	do	B1	s	B	R	W	a	f	h	Part No.
	h7	h10		+0.1		H10	H10	h10		-1	+0.1	±0.2	-0.5	
10	18.8	18.5	5.0	1.86	15.4	21.8	1.30	28.9	13.0	7.3	0.0	0	1.2	<b>OJUM-03-10</b>
12	21.8	21.5	6.0	1.86	18.4	22.8	1.30	31.9	18.0	9.0	3.0	1.33 (7°)	1.2	<b>OJUM-03-12</b>
16	25.8	25.5	8.0	2.86	20.4	24.9	1.30	35.9	32.0	11.6	2.2	0	1.2	<b>OJUM-03-16</b>
20	31.8	31.5	10.0	2.86	26.4	31.5	1.60	44.8	50.0	12.0	2.2	0	1.2	<b>OJUM-03-20</b>
25	39.8	39.0	12.5	2.86	34.4	44.1	1.85	57.8	39.0	14.5	3.0	-1.5 (-4.3°)	1.5	<b>OJUM-03-25</b>
30	46.7	46.0	15.0	2.86	41.4	52.1	1.85	67.8	57.0	16.6	3.0	2 (4.9°)	2	<b>OJUM-03-30</b>
40	61.7	61.0	20.0	2.86	56.4	60.9	2.15	79.8	100.0	21.0	3.0	1.5 (2.8°)	2	<b>OJUM-03-40</b>
50	74.7	74.0	25.0	2.86	69.4	78.0	2.65	99.8	157.0	25.5	5.0	2.5 (3.8°)	2	<b>OJUM-03-50</b>

Can be combined with:



RQA-03



RTA-03



RGA-03



RGAS-03



J



E7



X

Available with drylin® liners (optional: J200/A180):