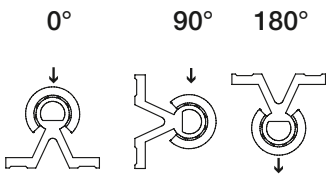
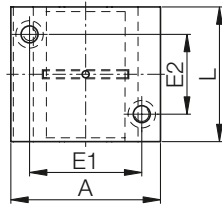
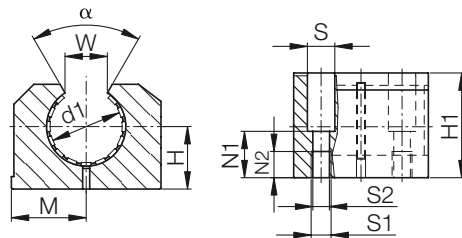


drylin® R pillow block | Product range

Open, anodised aluminium housing, long design



Order key

Type

Size

O J U M-06-12

| | | | | | |
|------|-----------|-------|--------|-------------|----|
| Open | igidur® J | Liner | Metric | Long design | d1 |
|------|-----------|-------|--------|-------------|----|



⁷⁸⁾ According to igus® testing method ▶ Page 1000

⁸²⁾ Design standards ▶ Page 944

Please note: installation instructions ▶ Page 945

Technical data

| Part No. | d1-Tolerance ⁷⁸⁾ | Fmax. dynamic ⁸²⁾ | | | Fmax. static ⁸²⁾ | | | Weight [g] |
|------------|-----------------------------|------------------------------|--------|-------|-----------------------------|--------|--------|---------------|
| | | P = 5 MPa | | | P = 35 MPa | | | |
| | | 0° | 90° | 180° | 0° | 90° | 180° | |
| OJUM-06-12 | +0.030 +0.088 | 960 | 635 | 240 | 6,720 | 4,445 | 1,680 | 95 |
| OJUM-06-16 | +0.030 +0.088 | 1440 | 990 | 396 | 10,080 | 6,943 | 2,772 | 158 |
| OJUM-06-20 | +0.030 +0.091 | 2250 | 1,800 | 900 | 15,750 | 12,600 | 6,300 | 266 |
| OJUM-06-25 | +0.030 +0.091 | 3625 | 2,953 | 1,523 | 25,375 | 20,670 | 10,658 | 530 |
| OJUM-06-30 | +0.040 +0.110 | 5100 | 4,250 | 2,278 | 35,700 | 29,735 | 15,946 | 818 |
| OJUM-06-40 | +0.040 +0.115 | 8000 | 6,810 | 3,800 | 56,000 | 47,660 | 26,600 | 1,485 |
| OJUM-06-50 | +0.050 +0.150 | 12,500 | 10,750 | 6,125 | 87,500 | 75,265 | 42,875 | 2,750 |

Dimensions [mm]

| d1 | H | H1 | A | M | E1 | E2 | S | S1 | S2 | N1 | N2 | W | α | L | Part No. |
|----|---------------|----|-----|------|-------|-------|------|-----|------|------|----|------|-----|-----|------------|
| | +0.01; -0.014 | | | | ±0.15 | ±0.15 | | | | | | -1 | [°] | | |
| 12 | 18 | 28 | 43 | 21.5 | 32 | 23 | 8.0 | M5 | 4.3 | 16.5 | 11 | 10.2 | 78 | 39 | OJUM-06-12 |
| 16 | 22 | 35 | 53 | 26.5 | 40 | 26 | 10.0 | M6 | 5.3 | 21.0 | 13 | 11.6 | 78 | 43 | OJUM-06-16 |
| 20 | 25 | 42 | 60 | 30.0 | 45 | 32 | 11.0 | M8 | 6.6 | 24.0 | 18 | 12.0 | 60 | 54 | OJUM-06-20 |
| 25 | 30 | 51 | 78 | 39.0 | 60 | 40 | 15.0 | M10 | 8.4 | 29.0 | 22 | 14.5 | 60 | 67 | OJUM-06-25 |
| 30 | 35 | 60 | 87 | 43.5 | 68 | 45 | 15.0 | M10 | 8.4 | 34.0 | 22 | 16.6 | 57 | 79 | OJUM-06-30 |
| 40 | 45 | 77 | 108 | 54.0 | 86 | 58 | 18.0 | M12 | 10.5 | 44.0 | 26 | 21.0 | 56 | 91 | OJUM-06-40 |
| 50 | 50 | 88 | 132 | 66.0 | 108 | 50 | 20.0 | M16 | 13.5 | 49.0 | 34 | 25.5 | 54 | 113 | OJUM-06-50 |

Available with drylin® liners (optional: J200/A180):



J



E7



X