

# drylin® R quad blocks | Product range

Open design



Order key

Type	Option	Size
------	--------	------

**OQA - 01 - 12**

Quad block with OJUM bearings	Aluminium housing	<b>Standard with OJUM-01</b>	Inner Ø
-------------------------------	-------------------	------------------------------	---------

Options:

**01:** Standard with OJUM-01

**03:** With OJUM-03



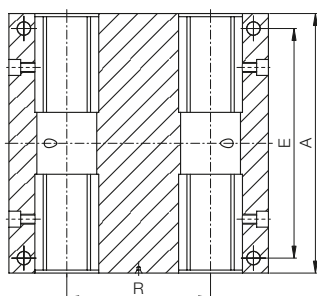
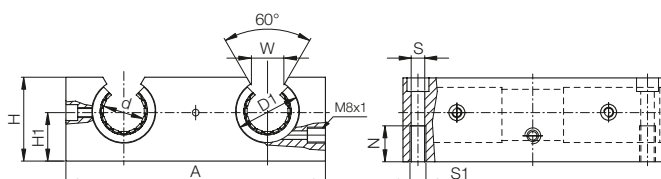
Please note:

Installation instructions

► Page 945



- Housing: aluminium, equipped with four drylin® R linear bearings



## Dimensions [mm]

d	D1	A	H	H1	W	R	N	E	S	S1	Part No. Standard with OJUM-01	Self-aligning with OJUM-03
12	22	85	30	18	14	42	13	73	5.3	M6	<b>OQA-01-12</b>	<b>OQA-03-12</b>
16	26	100	35	22	17	54	13	88	5.3	M6	<b>OQA-01-16</b>	<b>OQA-03-16</b>
20	32	130	42	25	17	72	18	115	6.8	M8	<b>OQA-01-20</b>	<b>OQA-03-20</b>
25	40	160	51	30	21	88	22	140	9.0	M10	<b>OQA-01-25</b>	<b>OQA-03-25</b>
30	47	180	60	35	21	96	26	158	10.5	M12	<b>OQA-01-30</b>	<b>OQA-03-30</b>
40	62	230	77	45	27	122	34	202	13.5	M16	<b>OQA-01-40</b>	<b>OQA-03-40</b>

Are equipped with:



OJUM-01



OJUM-03

Available with drylin® liners (optional: J200/A180):



J



E7



X