

drylin® R quad blocks | Product range

Open, tandem design



Order key

Type	Option	Size
------	--------	------

O T A - 01 - 12

Tandem housing with OJUM bearings	Aluminium housing	Standard with OJUM-01	Inner Ø
--------------------------------------	-------------------	----------------------------------	---------

Options:

01: Standard with OJUM-01

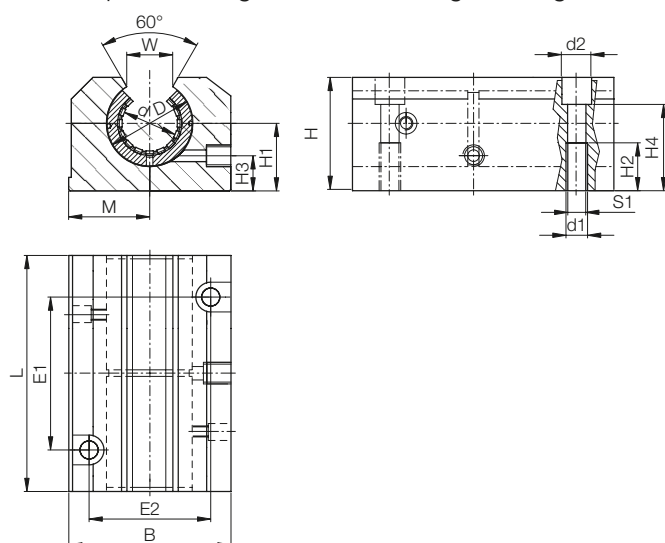
03: With OJUM-03



Please note:
Installation instructions
▶ Page 945



- Housing: aluminium, equipped with 2 drylin® R linear plain bearings to increase the guide length



Dimensions [mm]

d	D	H	H1	H2	H3	H4	S1	B	L	M	E1	E2	d1	d2	W	Part No.	Self-aligning
	H6		+0.01 -0.02						+0.3	±0.02	±0.15	±0.15				Standard with OJUM-01	with OJUM-03
12	22	30	18	13	10	25	M6	43	76	21.5	40	30	5.20	10	14	OTA-01-12	OTA-03-12
16	26	35	22	13	12	30	M6	53	84	26.5	45	36	5.20	10	17	OTA-01-16	OTA-03-16
20	32	42	25	18	13	34	M8	60	104	30.0	55	45	6.80	11	17	OTA-01-20	OTA-03-20
25	40	51	30	22	15	40	M10	78	130	39.0	70	54	8.60	15	21	OTA-01-25	OTA-03-25
30	47	60	35	26	16	48	M12	87	152	43.5	85	62	10.30	18	21	OTA-01-30	OTA-03-30
40	62	77	45	34	20	60	M16	108	176	54.0	100	80	14.25	20	27	OTA-01-40	OTA-03-40

Are equipped with:



OJUM-01



OJUM-03

Available with drylin® liners (optional: J200/A180):



J



E7



X