

drylin® R quad blocks | Product range

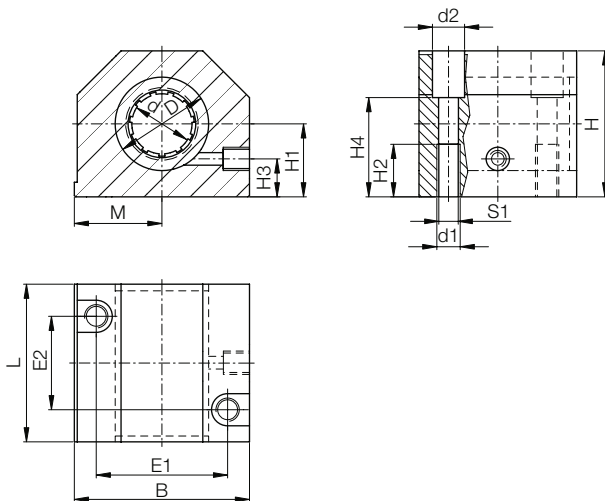
Closed, long design



Order key



- Housing: aluminium, equipped with drylin® R linear bearings



Type	Option	Size
------	--------	------

R G A - 01 - 12

Linear housing with RJUM bearings	Aluminium housing	Standard with RJUM-01	Inner Ø
-----------------------------------	-------------------	-----------------------	---------

Options:

01: Standard with RJUM-01

03: With RJUM-03

04: With RJM-01



Please note:

Installation instructions

► Page 945

Dimensions [mm]

d	D	H	H1	H2	H3	H4	S1	B	L	M	E1	E2	d1	d2	Part No.	Self-aligning	Solid polymer bearing
	H6		+0.01						±0.3	±0.02	±0.15	±0.15			Standard with RJUM-01	with RJUM-03	with RJM-01
			-0.02														
8	16	28	13	10	8	14	M4	35	32	17.5	25	20	3.2	6	RGA-01-08	-	RGA-04-08
12	22	35	18	11	10	25	M5	43	39	21.5	32	23	4.2	6	RGA-01-12	RGA-03-12	RGA-04-12
16	26	42	22	13	12	30	M6	53	43	26.5	40	26	5.2	10	RGA-01-16	RGA-03-16	RGA-04-16
20	32	50	25	18	13	34	M8	60	54	30.0	45	32	6.8	11	RGA-01-20	RGA-03-20	RGA-04-20
25	40	60	30	22	15	40	M10	78	67	39.0	60	40	8.6	15	RGA-01-25	RGA-03-25	RGA-04-25
30	47	70	35	22	16	48	M10	87	79	43.5	68	45	8.6	15	RGA-01-30	RGA-03-30	RGA-04-30
40	62	90	45	26	20	60	M12	108	91	54.0	86	58	10.3	18	RGA-01-40	RGA-03-40	RGA-04-40

Are equipped with:



RJUM-01



RJUM-03



RJM-01

Available with drylin® liners (optional: J200/A180):



J



E7



X