

drylin® R linear bearings | Product range

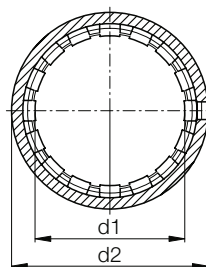
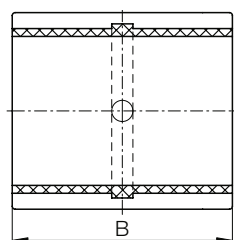
Closed, anodised aluminium adapter, short design



Order key

Type Size

R J U M-02-10

Closed
Igidur® J
Liner
Metric
Compact
d1

● Also available as a reduced clearance version RJUM-12 (Ø 10-50 mm)



⁷⁸⁾ According to igus® testing method ► Page 1000

⁸¹⁾ Ø < 10 mm with pressfitted cylindrical bearings

⁸²⁾ Design standards ► Page 944

Please note: installation instructions ► Page 945

Technical data

Part No.	Housing bore	d1-Tolerance ⁷⁸⁾	Fmax. dynamic ⁸²⁾	Fmax. static ⁸²⁾	Weight [g]
	Ø H7 [mm]	[mm]	[N]	[N]	
RJZM-02-06 ⁸¹⁾	12	+0.032 +0.070	600	4,200	4
RJZM-02-08 ⁸¹⁾	15	+0.032 +0.070	650	4,550	6
RJUM-02-10	17	+0.030 +0.088	650	4,550	8
RJUM-02-12	19	+0.030 +0.088	840	5,880	10
RJUM-02-16	24	+0.030 +0.088	1,200	8,400	17
RJUM-02-20	28	+0.030 +0.091	1,500	10,500	18
RJUM-02-25	35	+0.030 +0.091	2,500	17,500	42
RJUM-02-30	40	+0.040 +0.110	3,750	26,250	56
RJUM-02-40	52	+0.040 +0.115	6,000	42,000	113
RJUM-02-50	62	+0.050 +0.130	8,750	61,250	147

Dimensions [mm]

d1	d2 k7	B h10	Part No.
6	12	22	RJZM-02-06 ⁸¹⁾
8	15	24	RJZM-02-08 ⁸¹⁾
10	17	26	RJUM-02-10
12	19	28	RJUM-02-12
16	24	30	RJUM-02-16
20	28	30	RJUM-02-20
25	35	40	RJUM-02-25
30	40	50	RJUM-02-30
40	52	60	RJUM-02-40
50	62	70	RJUM-02-50