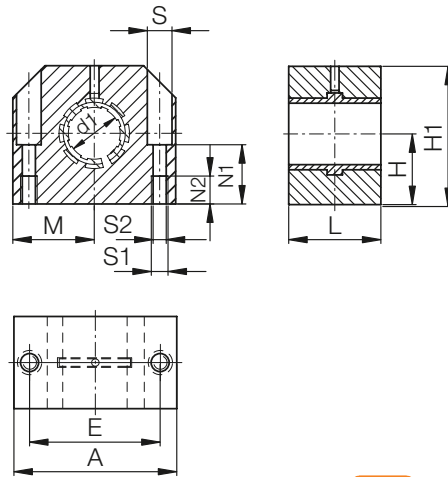


drylin® R pillow block | Product range

Closed, anodised aluminium housing, short design



Order key

Type	Size
R J U M-05-10	
Closed	iglidur® J
Liner	Metric
Compact	d1



⁷⁸⁾ According to igus® testing method ► Page 1000

⁸¹⁾ $\varnothing < 10$ mm with pressfitted cylindrical bearings

⁸²⁾ Design standards ► Page 944

Please note: installation instructions ► Page 945

Technical data

Part No.	d1-Tolerance ⁷⁸⁾ [mm]	F max. dynamic ⁸²⁾		Weight [g]
		P = 5 MPa [N]	P = 35 MPa [N]	
RJZM-05-08 ⁸¹⁾	+0.032 +0.070	960	6,720	46
RJUM-05-10	+0.030 +0.088	650	4,550	71
RJUM-05-12	+0.030 +0.088	840	5,880	78
RJUM-05-16	+0.030 +0.088	1,200	8,400	106
RJUM-05-20	+0.030 +0.091	1,500	10,500	132
RJUM-05-25	+0.030 +0.091	2,500	17,500	253
RJUM-05-30	+0.040 +0.110	3,750	26,250	374
RJUM-05-40	+0.040 +0.115	6,000	42,000	713
RJUM-05-50	+0.050 +0.150	8,750	61,250	1,168

Dimensions [mm]

d1	H	H1	A	M	E	S	S1	S2	N1	N2	L	Part No.
+0.01 -0.014					±0.15							
8	14	27	32	16.0	23	6.0	M4	3.4	13	9	24	RJZM-05-08 ⁸¹⁾
10	16	33	40	20.0	29	8.0	M5	4.3	16	11	26	RJUM-05-10
12	17	33	40	20.0	29	8.0	M5	4.3	16	11	28	RJUM-05-12
16	19	38	45	22.5	34	8.0	M5	4.3	18	11	30	RJUM-05-16
20	23	45	53	26.5	40	9.5	M6	5.3	22	13	30	RJUM-05-20
25	27	54	62	31.0	48	11.0	M8	6.6	26	18	40	RJUM-05-25
30	30	60	67	33.5	53	11.0	M8	6.6	29	18	50	RJUM-05-30
40	39	76	87	43.5	69	15.0	M10	8.4	38	22	60	RJUM-05-40
50	47	92	103	51.5	82	18.0	M12	10.5	46	26	70	RJUM-05-50

Available with drylin® liners (optional: J200/A180):



J



E7



X