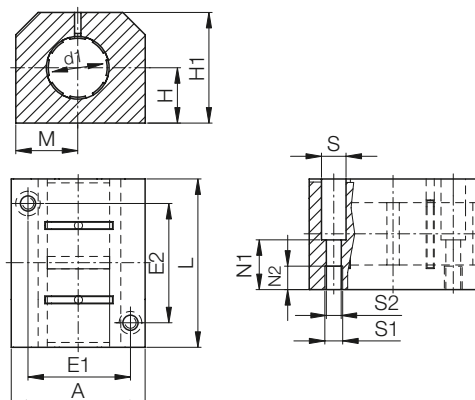


drylin® R pillow block | Product range

Closed, anodised aluminium housing, tandem design



Order key



Type	Size
R J U M T-05-12	
Closed	d1
igidur® J	
Liner	
Metric	
Tandem	
Compact	

- Tandem design
- Equipped with 2 liners to increase the guide length



⁷⁸⁾ According to igus® testing method ► Page 1000
⁸²⁾ Design standards ► Page 944
 Please note: installation instructions ► Page 945

Technical data

Part No.	d1-Tolerance ⁷⁸⁾ [mm]	F max. dynamic ⁸²⁾		Weight [g]
		P = 5 MPa [N]	P = 35 MPa [N]	
RJUMT-05-12	+0.030 +0.088	840	5,880	170
RJUMT-05-16	+0.030 +0.088	1,200	8,400	250
RJUMT-05-20	+0.030 +0.091	1,500	10,500	300
RJUMT-05-25	+0.030 +0.091	2,500	17,500	550
RJUMT-05-30	+0.040 +0.110	3,750	26,250	750
RJUMT-05-40	+0.040 +0.115	6,000	42,000	1,500
RJUMT-05-50	+0.050 +0.150	8,750	61,250	2,400

Dimensions [mm]

d1	H	H1	A	M	E1	E2	S	S1	S2	N1	N2	L	Part No.
	+0.01 -0.014				±0.15	±0.15							
12	17	33	40	20	29	35	8.0	M5	4.3	16.0	11	60	RJUMT-05-12
16	19	38	45	22.5	34	40	8.0	M5	4.3	18.0	11	65	RJUMT-05-16
20	23	45	53	26.5	40	45	9.5	M6	5.3	22.0	13	65	RJUMT-05-20
25	27	54	62	31	48	55	11.0	M8	6.6	26.0	18	85	RJUMT-05-25
30	30	60	67	33.5	53	70	11.0	M8	6.6	29.0	18	105	RJUMT-05-30
40	39	76	87	43.5	69	85	15.0	M10	8.4	38.0	22	125	RJUMT-05-40
50	47	92	103	51.5	82	100	18.0	M12	10.5	46.0	26	145	RJUMT-05-50

Available with drylin® liners (optional: J200/A180):



J



E7



X