

drylin® R linear bearings | Product range

Split aluminium adapter (floating bearing)



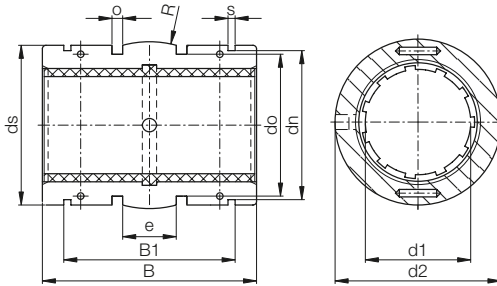
Order key

Type

Size

T J U M-03-10

Split	igidur® J	Liner	Metric	Self-aligning	d1
-------	-----------	-------	--------	---------------	----



- Split aluminium adapter with spherical middle area for automatic compensation of misalignments and O-rings for elastic seating



⁷⁸⁾ According to igus® testing method ▶ Page 1000

⁸²⁾ Design standards ▶ Page 944

Please note: installation instructions ▶ Page 945

Floating bearing ▶ 946



Imperial dimensions

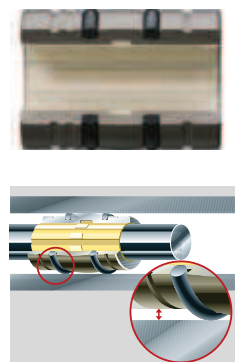
▶ Page 1404

Technical data

Part No.	d1-Tolerance ⁷⁸⁾ [mm]	F max. dynamic ⁸²⁾		Weight [g]
		P = 5 MPa [N]	P = 35 MPa [N]	
TJUM-03-10	+0.030 +0.092	725	5,075	11
TJUM-03-12	+0.030 +0.097	960	6,720	17
TJUM-03-16	+0.030 +0.097	1,440	10,080	23
TJUM-03-20	+0.030 +0.103	2,250	15,750	44
TJUM-03-25	+0.030 +0.103	3,625	25,375	92
TJUM-03-30	+0.040 +0.124	5,100	35,700	145
TJUM-03-40	+0.040 +0.124	8,000	56,000	311
TJUM-03-50	+0.050 +0.196	12,500	87,500	542

Dimensions [mm]

d1	d2	B	B1	s	dn	ds	do	o	e	R	Part No.	
		h10	H10	H10	h10	h10		+0.1				
10	19	-0.020	-0.040	28.9	21.8	1.30	17.5	18.5	15.4	1.86	5.0	TJUM-03-10
12	22	-0.020	-0.040	31.9	22.8	1.30	20.5	21.5	18.4	1.86	6.0	TJUM-03-12
16	26	-0.020	-0.040	35.9	24.9	1.30	24.2	25.5	20.4	2.86	8.0	TJUM-03-16
20	32	-0.020	-0.045	44.8	31.5	1.60	29.6	31.5	26.4	2.86	10.0	TJUM-03-20
25	40	-0.030	-0.055	57.8	44.1	1.85	36.5	39.0	34.4	2.86	12.5	TJUM-03-25
30	47	-0.030	-0.055	67.8	52.1	1.85	43.5	46.0	41.4	2.86	15.0	TJUM-03-30
40	62	-0.030	-0.060	79.8	60.9	2.15	57.8	61.0	56.4	2.86	20.0	TJUM-03-40
50	75	-0.030	-0.060	99.8	78.0	2.65	70.5	74.0	69.4	2.86	25.0	TJUM-03-50



Can be combined with:



RQA-03



RTA-03



RGA-03



RGAS-03



J



E7



X

Available with drylin® liners (optional: J200/A180):