

drylin® R press-fit bearings | Product range

Made from iglidur® L100

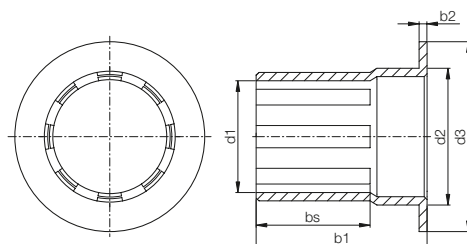


Order key

Type	Size
------	------

W L F M-1214-15

igidur® L100	Series L1	With flange	Metric	Inner Ø	Outer Ø	Length
--------------	-----------	-------------	--------	---------	---------	--------



- Extreme wear resistance
- Low coefficients of friction



⁸⁰⁾ Measured with gage

Please note: installation instructions ► Page 945

Material table ► Page 1435



min. -40 °C

max. +100 °C

Dimensions [mm]

d1	d1-Tolerance ⁸⁰⁾	d2	d3	b1	b2	bs	Part No.
12	+0.000 +0.050	14	20	15.0	1.0	9	WLFM-1214-15
16	+0.000 +0.050	18	24	16.0	1.0	10	WLFM-1618-16
20	+0.000 +0.060	23	30	16.5	1.5	10	WLFM-2023-16
25	+0.000 +0.060	28	35	21.5	1.5	11	WLFM-2528-21
30	+0.000 +0.060	34	42	27.0	2.0	15	WLFM-3034-27
40	+0.000 +0.060	44	52	32.0	2.0	20	WLFM-4044-32
50	+0.000 +0.070	55	63	37.5	2.5	25	WLFM-5055-37