

# drylin® R liners | Product range

Long, closed design for round shafts –  
made from iglidur® X (the extreme)



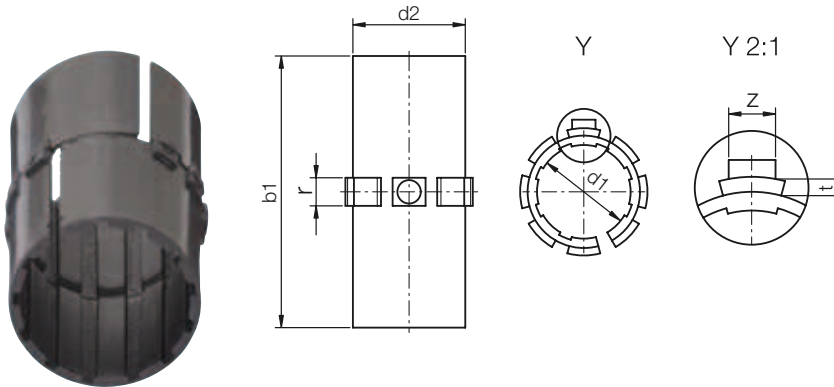
Order key

Type

Size

**X U M-01-12**

igidur® X	Liner	Metric	Standard	d1
-----------	-------	--------	----------	----



- For high temperature applications
- Recommended in combination with stainless steel or chrome-plated shafts
- In two parts



<sup>78)</sup> According to igus® testing method ► Page 1000

Please note: installation instructions ► Page 945



min. -100 °C

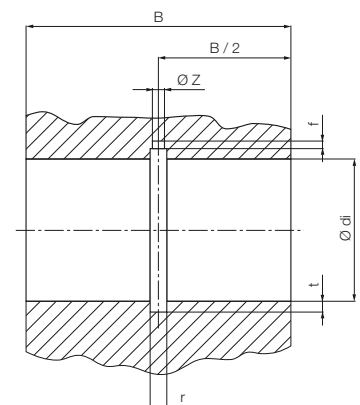
max. +250 °C

## Dimensions [mm]

d1	d1-Tolerance <sup>78)</sup>	d2	b1	r	t	Z	Weight [g]	Part No.
12	+0.016 +0.086	14	31	3.0	0.8	3.0	1.46	<b>XUM-01-12</b>
14	+0.016 +0.086	16	30	3.5	0.6	3.5	1.81	<b>XUM-01-14</b>
16	+0.016 +0.086	18	35	3.5	0.8	3.5	2.13	<b>XUM-01-16</b>
20	+0.020 +0.104	23	44	5.0	0.8	3.5	4.70	<b>XUM-01-20</b>
25	+0.020 +0.104	28	57	5.0	0.8	4.0	8.27	<b>XUM-01-25</b>
30	+0.025 +0.125	34	67	5.0	0.8	4.0	15.57	<b>XUM-01-30</b>
40	+0.025 +0.125	44	79	6.0	1.3	5.0	24.0	<b>XUM-01-40</b>

## Housing bore for liner XUM-01 | dimensions [mm]

Shaft Ø	d <sub>i</sub> H7	B h10	r +0.05	t +0.1	f +0.5	Z +0.2	Part No.
12	14	32	3.0	1.0	1.5	3.1	<b>XUM-01-12</b>
14	16	31	3.5	0.8	1.7	3.6	<b>XUM-01-14</b>
16	18	36	3.5	1.0	1.7	3.6	<b>XUM-01-16</b>
20	23	45	5.0	1.0	2.0	3.6	<b>XUM-01-20</b>
25	28	58	5.0	1.0	2.0	4.1	<b>XUM-01-25</b>
30	34	68	5.0	1.0	2.0	4.1	<b>XUM-01-30</b>
40	44	80	6.0	1.5	2.5	5.1	<b>XUM-01-40</b>



Can be combined with:



RJUM-01/-03  
TJUM-01/-03



RJUM-06/-06-LL



FJUM-01/-02