

Rod ends, female thread; 2nd generation: KBRM CL and KBLM CL



- Design with metal sleeve for higher torque strength available
- Dimensional series K according to standard DIN ISO 12240



Simple assembly due to the hexagonal body and the integrated lock nut.

Technical data

Part No.		Max. static tensile strength		Max. static radial load		Min. thread depth	Max. torque strength	Max. torque through ball		Weight
Right-hand thread	Left-hand thread	Short term [N]	Long term [N]	Short term [N]	Long term [N]	Thread [mm]	Inner threading [Nm]	Standard without MH [Nm]	Standard with MH [Nm]	[g]
KBRM-06 CL	KBLM-06 CL	1,400	700	300	150	8	0.75	10	15	4.5
KBRM-08 CL	KBLM-08 CL	2,100	1,050	500	250	11	2.0	12	40	8.6
KBRM-10 CL	KBLM-10 CL	3,100	1,550	800	400	13	3.0	20	50	14.1

Spherical ball materials to choose ► Page 693



RKM: low-cost



JKM: low moisture absorption

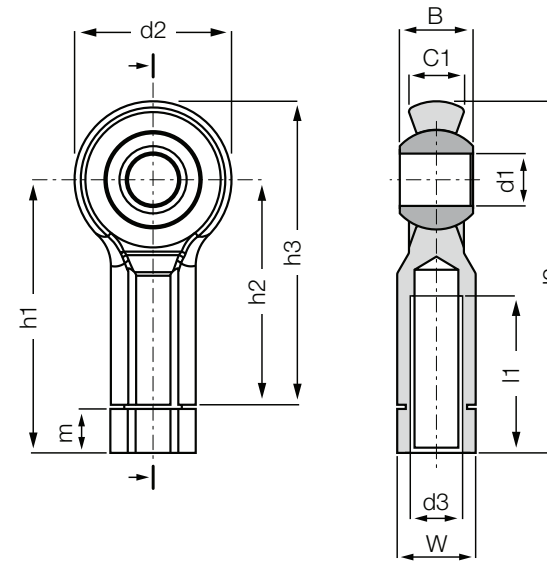


W300: standard spherical bearing with metal sleeve



J4KM: low-cost and low moisture absorption

Rod ends, female thread; 2nd generation: KBRM CL and KBLM CL



Order key

Type	Size	Version	Options
K B ... M - 06 CL			
Dimensional series K			
Housing (female thread)			
Thread			
Metric			
Inner-Ø [mm]			
2nd generation			
			Thread L = left-hand thread R = right-hand thread

Material:
 Housing: **igumid G** ► Page 1235
 Spherical ball: **iglidur® W300** ► Page 121
 More spherical ball materials on request
 ► Page 693

Dimensions [mm]

Part No.		d1	d2	d3	W	B		C1	h3	h1	h2	l1	l2	m	Max. pivot angle
Right-hand thread	Left-hand thread	E10				without MH	with MH								
KBRM-06 CL	KBLM-06 CL	06	20	M06	SW10	9	9.2	7	40	36.5	30	20	46.5	5.7	40°
KBRM-08 CL	KBLM-08 CL	08	24	M08	SW13	12	12.2	9	48	44.3	36	25	56.3	7.5	35°
KBRM-10 CL	KBLM-10 CL	10	30	M10	SW15	14	14.2	10.5	58	52.2	43	30	67.2	8.4	35°

Rod ends can be ordered in metric dimensions **with metal insert** with the addition of **MH** after the part numbers listed here. Example: **KBRM-10 CL MH (Inner-Ø: 10 mm)**.

For another spherical bearing material than iglidur® W300, please add **J** or **R** to the part number. Example: **KBRM-10 CL J**.