



straub 

the right connection

STRAUB-CLAMP

The original for tight, fast and durable connections.

The STRAUB-CLAMP enables repairs of
gas and water pipelines (drinking or waste water)
on all kinds of pipe material.

www.straub.ch

THE REPAIR CLAMP

STRAUB-CLAMP

Damaged pipes (gas, water, waste water) up to 250mm can be repaired safely and reliably with the non-axial restraint repair coupling STRAUB-CLAMP.

Repair Clamps provide a safe and reliable sealing of damaged pipes made of a wide range of materials (steel, cast iron, ductile cast iron, fibre cement, PVC). Repairs on large damaged areas up to 250mm are possible.

The STRAUB-CLAMP repair clamp is manufactured with the standard seals out of NBR resp., EPDM and is available as a one or two-piece version.

The repair clamp must be at least as long as the outside diameter of the pipe being repaired. Prepare the pipe surface according to the general installation requirements (please refer to the STRAUB-CLAMP fitting instructions).

Convince yourself of the benefits. We guarantee you a safe, easy and tight solution!

Example for ordering:

STRAUB-CLAMP SCE 88.0mm, EPDM/SS
one-piece, width 300mm

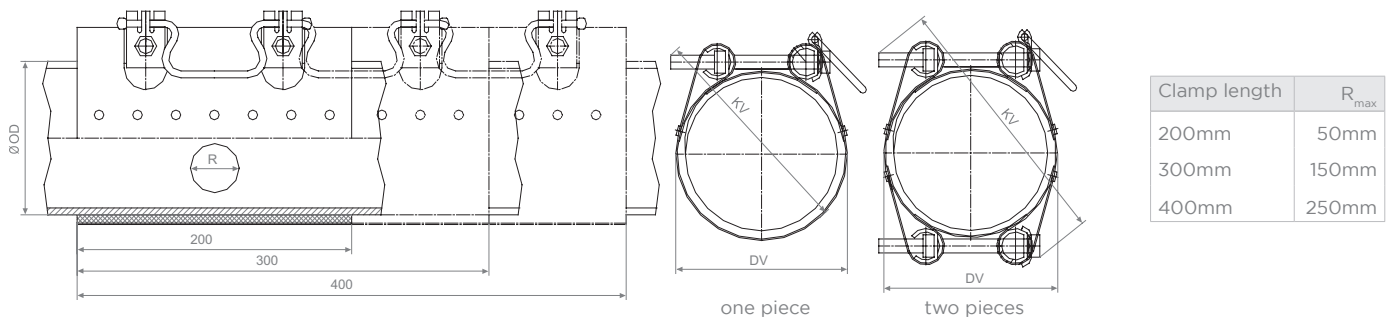
STRAUB-CLAMP SCZ 190.0mm, NBR/SS
two-piece, width 400mm

- 
- **IDEAL FOR REPAIRING LARGE DAMAGED AREAS**
 - **EASY HANDLING AND FITTING**
 - **NO SPECIAL TOOLS REQUIRED**

STRAUB-CLAMP

Components	Materials
Casing	AISI 304
Bolts	A2 - 70
Bars	AISI 304

Sealing sleeve EPDM	Temp.: -5°C up to +40°C Medium: all qualities of water, waste water, air, solids and chemical products
Sealing sleeve NBR	Temp.: -5°C up to +40°C Medium: water, gas, oil, fuel and other hydrocarbons



STRAUB-CLAMP SCE - one piece

ø 44.0 - 330.0MM

OD [mm]	Clamping range [mm]	PN ¹ [bar]	2 locking bolts [mm]	3 locking bolts [mm]	4 locking bolts [mm]	DV [mm]	KV [mm]	Torque rate [Nm]	Allen head [mm]	Thread M...
44.0	44 - 48	16.0	200	300		60	117	20	17	10
48.0	48 - 52	16.0	200	300		64	120	20	17	10
54.0	54 - 58	16.0	200	300		70	125	20	17	10
60.0	60 - 67	16.0	200	300		79	127	20	17	10
67.0	67 - 74	16.0	200	300		86	130	20	17	10
70.0	70 - 77	16.0	200	300		89	135	20	17	10
75.0	75 - 83	16.0	200	300		65	138	20	17	10
82.0	82 - 89	16.0	200	300	400	101	145	20	17	10
87.0	87 - 95	16.0	200	300	400	107	149	20	17	10
88.0	88 - 98	16.0	200	300	400	110	149	20	17	10
95.0	95 - 104	16.0	200	300	400	116	155	20	17	10
108.0	108 - 118	16.0	200	300	400	120	166	20	17	10
113.0	113 - 123	16.0	200	300	400	135	171	20	17	10
118.0	118 - 128	16.0	200	300	400	140	175	20	17	10
120.0	120 - 131	16.0	200	300	400	143	176	20	17	10
132.0	132 - 142	16.0	200	300	400	154	188	35	19	12
135.0	135 - 145	16.0	200	300	400	157	191	35	19	12
139.0	139 - 149	16.0	200	300	400	161	195	35	19	12
145.0	145 - 155	16.0	200	300	400	167	201	35	19	12
159.0	159 - 170	16.0	200	300	400	182	214	35	19	12
167.0	167 - 178	16.0	200	300	400	190	221	35	19	12
176.0	176 - 187	16.0	200	300	400	199	230	35	19	12
193.0	193 - 203	10.0	200	300	400	215	247	35	19	12
215.0	215 - 225	10.0	200	300	400	237	268	35	19	12
228.0	228 - 239	10.0	200	300		251	281	35	19	12
240.0	240 - 250	10.0	200	300		262	292	35	19	12
261.0	261 - 271	10.0	200	300		283	313	35	19	12
269.0	269 - 280	10.0	200	300		292	321	35	19	12
280.0	280 - 291	10.0		300		303	332	35	19	12
315.0	315 - 325	10.0		300		337	366	40	19	12
320.0	320 - 330	10.0		300		342	371	40	19	12

Remarks:

- Follow fitting instructions
- Different pipe diameters (transition) are not possible
- Test pressure = PN x 1.5
- Radial length of damaged area max. 20% of pipe outside diameters
- The repair clamp must be centred over the damaged area

¹ Working pressure for gas: max. 5bar

STRAUB-CLAMP SCZ - two pieces

ø 88.0 - 440.0MM

OD [mm]	Clamping range [mm]	PN ¹ [bar]	2 locking bolts [mm]	3 locking bolts [mm]	4 locking bolts [mm]	DV [mm]	KV [mm]	Torque rate [Nm]	Allen head [mm]	Thread M...
88.0	88 - 110	16.0	200	300	400	117	186	20	17	10
100.0	100 - 120	16.0	200	300	400	132	197	20	17	10
108.0	108 - 128	16.0	200	300	400	140	204	20	17	10
114.0	114 - 134	16.0	200	300	400	146	209	20	17	10
120.0	120 - 140	16.0	200	300	400	152	215	20	17	10
130.0	130 - 150	16.0	200	300	400	162	288	20	19	12
140.0	140 - 160	16.0	200	300	400	172	237	35	19	12
159.0	159 - 180	16.0	200	300	400	192	255	35	19	12
168.0	168 - 189	16.0	200	300	400	201	264	35	19	12
190.0	190 - 210	16.0	200	300	400	190	284	35	19	12
210.0	210 - 230	10.0	200	300	400	242	303	35	19	12
218.0	218 - 238	10.0	200	300	400	252	312	35	19	12
240.0	240 - 260	10.0	200	300	400	272	332	35	19	12
269.0	269 - 289	10.0	200	300	400	301	360	35	19	12
282.0	282 - 302	10.0	200	300	400	314	373	35	19	12
315.0	315 - 335	10.0	200	300	400	347	405	40	19	12
322.0	322 - 344	10.0		300	400	356	413	40	19	12
337.0	337 - 358	6.0		300	400	370	427	40	19	12
347.0	347 - 367	6.0		300	400	379	436	40	19	12
365.0	365 - 385	5.0			400	397	453	40	19	12
390.0	390 - 410	5.0			400	422	478	40	19	12
410.0	410 - 430	5.0			400	442	498	40	19	12
420.0	420 - 440	5.0			400	452	508	40	19	12

Remarks:

- Follow fitting instructions
- Different pipe diameters (transition) are not possible
- Test pressure = PN x 1.5
- Radial length of damaged area max. 20% of pipe outside diameters
- The repair clamp must be centred over the damaged area

¹ Working pressure for gas: max. 5bar

Aliaxis
UTILITIES & INDUSTRY

STRAUB Werke AG
Straubstrasse 13 - 7323 Wangs - Switzerland
Tel +41 81 725 41 00 - Fax +41 81 725 41 01
straub@straub.ch

straub 
the right connection

