



Pop-up rotating cleaning nozzles »PopUp Whirly« Series 5P2 / 5P3

NEW

Series 5P2 / 5P3

When a certain fluid pressure is reached, the rotating cleaning nozzle of PopUp Whirly is automatically extended from the enclosure. These free-spinning rotating nozzles can be installed flush in the tank wall. They are also suitable for cleaning pipes and for applications that use foam. They are of particular interest for applications in the food and beverage industry as well as for the pharmaceutical and chemical industry.



Function video

Scan the QR-code
or go to:
[www.lechler.de/
PopupWhirlyGB](http://www.lechler.de/PopupWhirlyGB)



Max. tank diameter [m]

0 | 1 | 2 | 3 | 4 | 5 | 6 | 7 | 8 | 9



Materials

Stainless steel 316L SS,
stainless steel 316Ti SS
(spring),
stainless steel 316 SS
(snap ring), PEEK (slide-
bearing), FKM (O-ring)

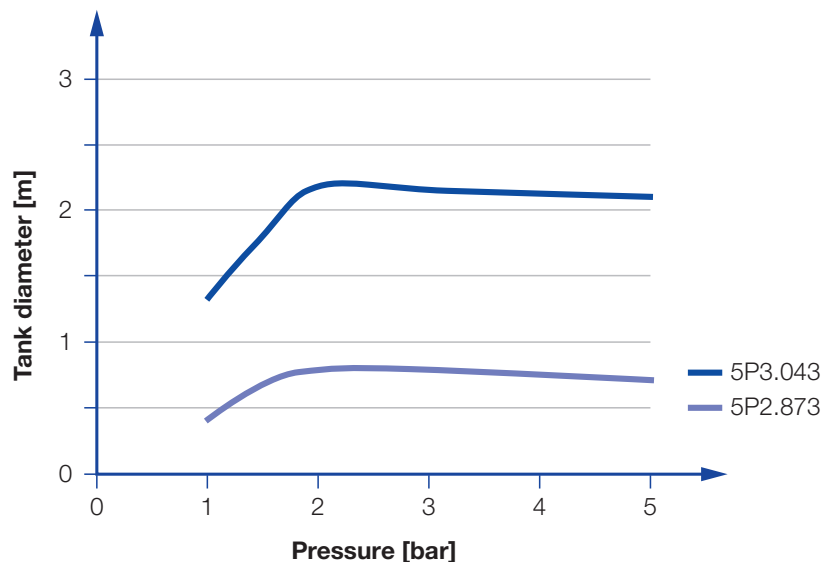


Max. temperature
140 °C



Recommended operating pressure

2 bar, 5P2: opening
pressure approx. 1.0 bar,
closing pressure approx.
0.5 bar,
5P3: opening pressure
approx. 0.9 bar,
closing pressure approx.
0.5 bar



Overview of the tank diameter, depending upon the pressure of series 5P2 / 5P3



Installation

Operation in every
direction is possible



Filtration

Line strainer with a mesh
size of 0.3 mm/50 Mesh

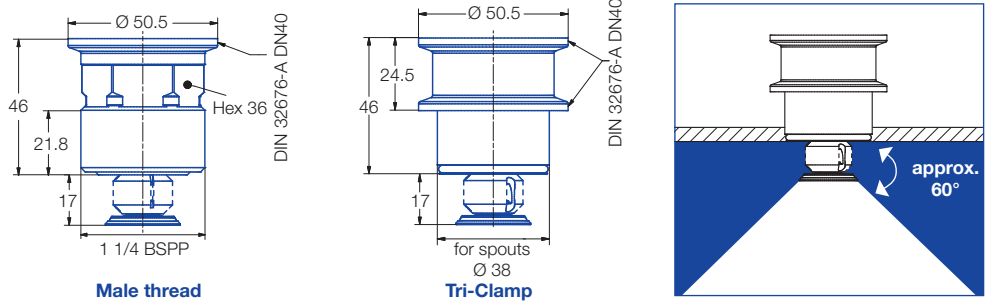


Bearing

Slide bearing
made of PEEK



Series 5P2

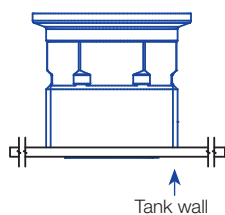


Spray angle	Ordering no.	Tank connection		E Ø [mm]	V [l/min]				Max. tank diameter [m]
		1 1/4 BSPP	Tri-Clamp		p [bar] (p _{max} = 6 bar)				
					1	2	3	at 40 psi [US gal./min]	
	5P2.873.1Y.AP	○	-	1.1	10.6	15.0	18.4	5	0.8
	5P2.873.1Y.00	-	○	1.1	10.6	15.0	18.4	5	0.8
	5P2.923.1Y.AP	○	-	1.1	14.1	20.0	24.5	6	1.0
	5P2.923.1Y.00	-	○	1.1	14.1	20.0	24.5	6	1.0

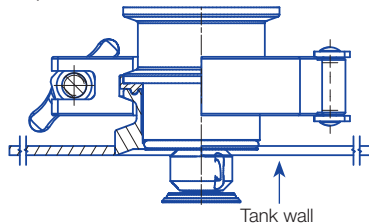
The maximum tank diameter shown above applies for the recommended operating pressure and is indicative only. The cleaning result is also affected by the type of soiling.

Nozzle installation

Via thread in idle position



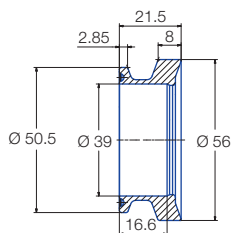
Via Tri-Clamp in operating position



Information on operation

- The PopUp Whirly is not suitable for operation with compressed air or any other gas.
- Operation above the recommended operating pressure means higher wear and smaller droplets. This might have adverse effects on the cleaning result.

Weld-in flange for Tri-Clamp-Version



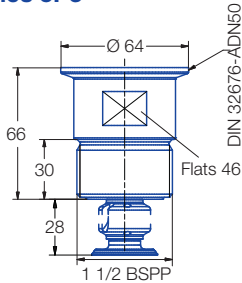
Ordering number
050.020.1Y.01.00
Material
316L SS

Information
Gasket with a thickness of 2 mm must be used if the PopUp Whirly is installed with this weld-in flange.

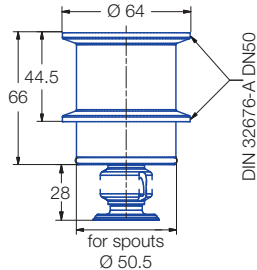


Pop-up rotating cleaning nozzles »PopUp Whirly« Series 5P2 / 5P3

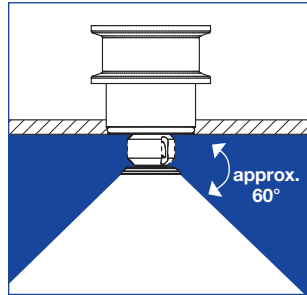
Series 5P3



Male thread



Tri-Clamp

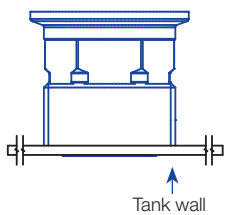


Spray angle	Ordering no.	Tank connection		E Ø [mm]	V [l/min]				Max. tank diameter [m]
		1 1/2 BSPP	Tri-Clamp		p [bar] (p _{max} = 6 bar)				
					1	2	3	at 40 psi [US gal./min]	
	5P3.043.1Y.AR	○	-	1.2	28.3	40	49	12	2.2
	5P3.043.1Y.00	-	○	1.2	28.3	40	49	12	2.2

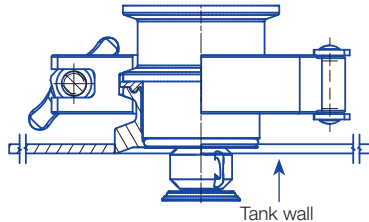
The maximum tank diameter shown above applies for the recommended operating pressure and is indicative only. The cleaning result is also affected by the type of soiling.

Nozzle installation

Via thread in idle position



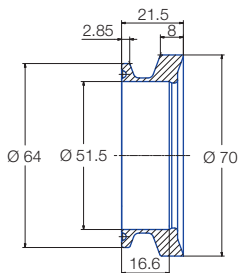
Via Tri-Clamp in operating position



Information on operation

- The PopUp Whirly is not suitable for operation with compressed air or any other gas.
- Operation above the recommended operating pressure means higher wear and smaller droplets. This might have adverse effects on the cleaning result.

Weld-in flange for Tri-Clamp-Version



Ordering number

050.020.1Y.01.01

Material

316L SS

Information

Gasket with a thickness of 2 mm must be used if the PopUp Whirly is installed with this weld-in flange.