

Static Spray Balls – for standard industrial use Series 540/591

Series 540

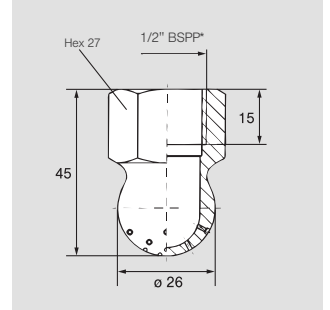
- Very compact static spray ball
- Sharp solids jets, excellent for rinsing small drums
- Also to use with saturated steam
- Nozzles 120° on request

Max. tank diameter:
1 – 3 m

Operating pressure:
1 – 3 bar

Max. temperature:
200 °C

Material:
Stainless steel AISI 303



Spray angle	Ordering number	E Ø [mm]	Flow rate [l/min]			
			Δ p [bar]			
			0.5	2	5	40 psi [US gal./min]
240°	540.909.16	0.8	9.0	18.0	28.5	5.6
	540.989.16	1.0	14.0	28.0	44.3	8.7
	541.109.16	1.5	28.5	57.0	90.1	17.7
	541.189.16	2.0	45.0	90.0	142.3	27.9
	541.239.16	2.3	59.0	118.0	186.6	36.6

E = Narrowest free cross-section · B = bore diameter · *NPT on request

Series 591

- Popular sprayball design
- For higher flow rates
- Corrosion resistant material
- Available in different sizes

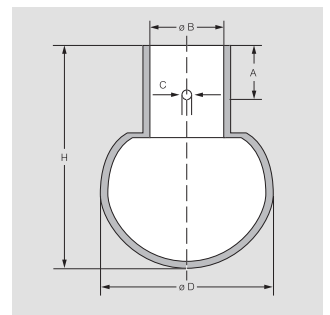
Max. tank diameter:
1 – 5 m

Operating pressure:
1 – 3 bar

Max. temperature:
200 °C

Materials:
Stainless steel AISI 316Ti
Pin:
Stainless steel AISI 316L

Other materials
- 316L (FDA-conform)
- PTFE



Spray angle	Ordering number	E Ø [mm]	Effective cleaning Ø [m]	Flow rate [l/min]				40 psi [US gal./min]	Dimensions approx. [mm]					
				Δ p [bar] (Δ p _{max} = 5 bar)					Ø D	Lenght H	Con-nection B	Slip-on *	C	A
				0.5	1	2	3							
360°	591.M11.17.00	0.8	0.5	7	10	14	17	4	20	32,5	8,2	DN8	-	-
	591.X11.17.00	1.2	0.5-1.0	25	35	49	61	15	24	37,5	12,2	DN10	2,2	9,0
	591.Y11.17.00	1.2	1-1.5	49	70	99	121	31	30	42	18,2	DN15	2,2	9,0
	591.A21.17.00	2.0	2-2.5	91	128	181	222	56	40	53	22,2	DN20	2,5	9,0
	591.B31.17.00	2.1	2.0-3.0	130	183	259	318	80	64	90	28,2	DN25	2,8	18,0
	591.B51.17.00	3.0	3.0-4.0	206	292	412	505	128	64	90	28,2	DN25	2,8	18,0
180°	591.A23.17.00	2.0	2.0-2.5	74	105	148	182	46	40	53	22,2	DN20	2,5	9,0
	591.B53.17.00	3.0	3.0-4.0	146	207	292	358	91	64	90	28,2	DN25	2,8	18,0
180°	591.B32.17.00	2.1	2.5-3.0	103	145	205	251	64	64	90	28,2	DN25	2,8	18,0
	591.D42.17.00	2.2	4.0-4.5	230	325	460	563	142	90	122	52,3	DN50	3,3	25,0

E = Narrowest free cross-section · B = Bore diameter · * Female thread on request
Higher pressure generally means smaller droplets. This might have adverse effects on the cleaning result.